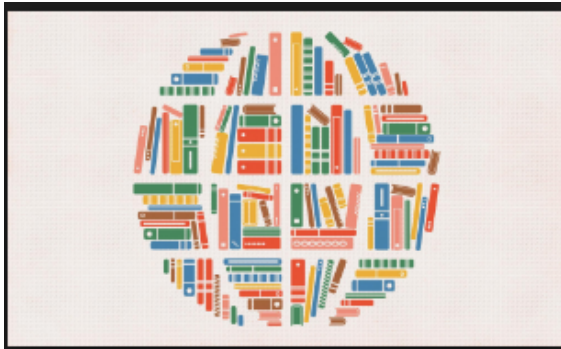


## **Mr. Geiger's Syllabus- ELA Grades 10 and 11**

### **Goals for the year:**

Students will be able to write and support arguments by citing evidence.  
Students will be able to think critically and express their thoughts in writing.  
Students will read short and long stories and be able to comprehend the text verbally and in writing.



### **Classroom seating:**

Open seating, will assign seating if needed.

### **Materials:**

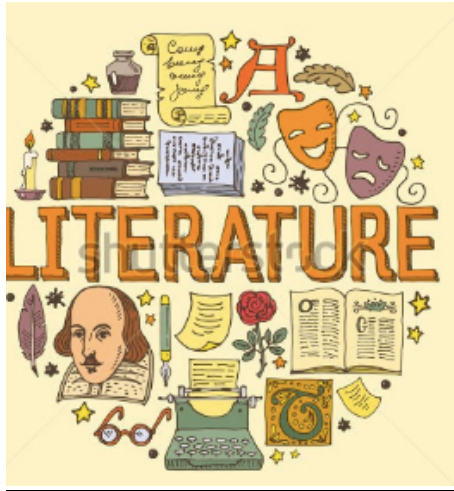
Notebooks, pens, folder or binder, homework goes to Ms. Owen (we'll have folders with name on it, Ms. Owen will have this)

### **Classroom rules:**

- Respect yourself and others at all times
- One person speaks at a time/ one mic
- Don't be afraid to ask a question. You are BRAVE to ask questions, participate, and share your thoughts!
- No phones
- Ask to use the restroom
- Please provide a pass if you're coming from the office or doctor or if you're late

- Work as a team to improve knowledge/support one another
- Open your mind

Classroom rules may change throughout the year.



### **Grading:**

15%-Participation and attendance- attending classes, arriving on time, participating respectfully in discussion

15%-Homework

30%-Tests

40%-Papers/essays/ projects

For participation- you will be graded **every class** on a 1-4 point scale. Your score will include, active participation, punctuality, respect to your classmates, teachers, and selves, and ability to communicate effectively.



**Late work:**

You will lose 5 points per day for late work. You will lose 1 point per day for every late homework assignment. Tests can be made up if notified in advance of the absence.

After 5 days, late work will not be accepted unless there is a valid, documented excuse.

**SGI:**

My SGI will take place every Friday at 8:00 A.M.